



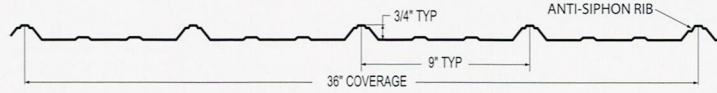
**Kansas City:**  
 8341 Ruby Ave.  
 Kansas City, KS 66111  
**913-766-7200**  
 855-818-4958 toll-free  
 913-766-7201 fax

**Tulsa:**  
 131 S. 147th E. Ave.  
 Tulsa, OK 74116  
**918-641-0641**  
 866-674-7657 toll-free  
 918-641-0640 fax



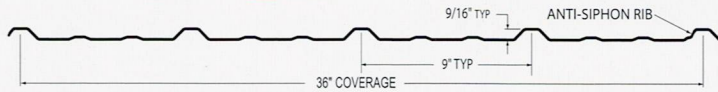
contact@metalpanelsinc.com  
 www.metalpanelsinc.com

**STRONGSEAM PANELS** **AG Panel**



AVAILABLE IN 29 GA & 26 GA (24 GA BY SPECIAL ORDER ONLY)

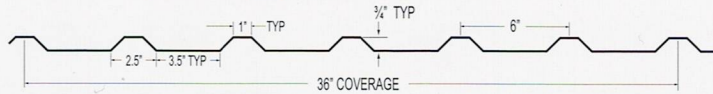
**STRONGSEAM PANELS** **Flat-Loc Panel**



AVAILABLE IN 29 GA & 26 GA (24 GA BY SPECIAL ORDER ONLY)

\* Produced in Tulsa

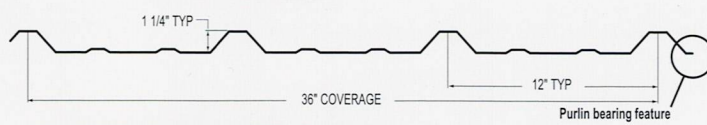
**STRONGSEAM PANELS** **M Panel**



AVAILABLE IN 26 GA (22 GA & 24 GA BY SPECIAL ORDER ONLY)

\*Produced in KC

**STRONGSEAM PANELS** **PBR Panel**



AVAILABLE IN 26 GA (22 GA & 24 GA BY SPECIAL ORDER ONLY)

Purlin bearing feature

All colors shown are approximate to actual finish colors.  
**Please review actual finish samples before ordering.**

**WeatherXL** 40-Year Finishes

ENERGY STAR<sup>®</sup> compliant coatings by **SHERWIN-WILLIAMS** Coil Coatings



Polar White



Ivory



Tan



Ash Gray



Burnished Slate



Evergreen



Hawaiian Blue



Bone White



Light Stone



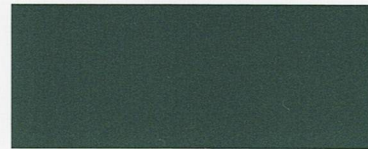
Desert Sand



Charcoal Gray



Brown



Hunter Green



Berry



Crimson Red



Rustic Red

**26 GA. ONLY COLORS**



Gold



\*Copper Metallic



\*Gallery Blue

\* PREMIUM COLOR

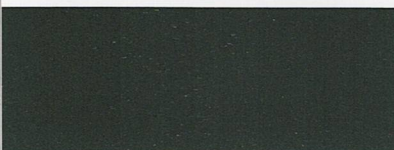
✓ Crinkle-finish colors available:

\* Black \* Charcoal \* Burnished Slate

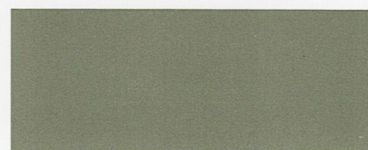
See your Sales Representative for color samples



Black



Fern Green



Colony Green